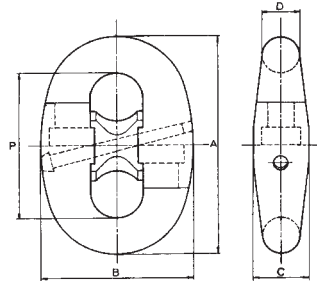


SPOJNI ELEMENTI ZA BRODSKE LANCE

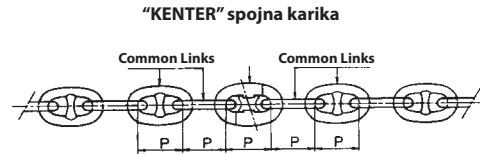
209 CONNECTING LINKS FOR SHIP CHAIN



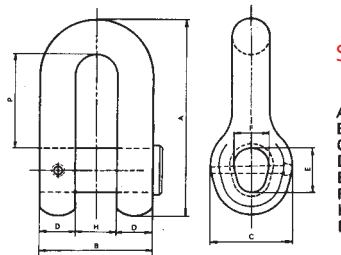
SI. 209 a

- A = 6 d
- B ≈ 4,2 d
- C ≈ 1,52 d
- D = 1 d
- P = 4 d

d = promjer lanca
P = korak lanca

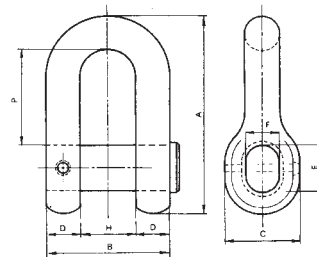
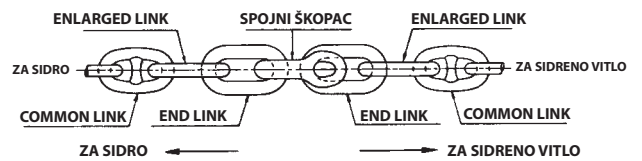


"KENTER" spojna karika



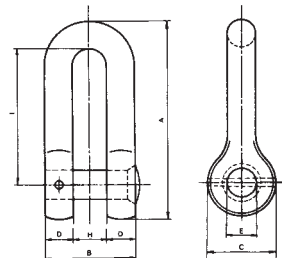
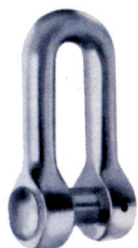
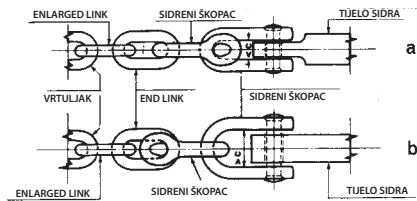
SI. 209 b

- A ≈ 7,1 d
- B ≈ 4,0 d
- C ≈ 2,8 d
- D ≈ 1,3 d
- E ≈ 1,6 d
- F ≈ 1,2 d
- H ≈ 1,4 d
- P ≈ 3,4 d



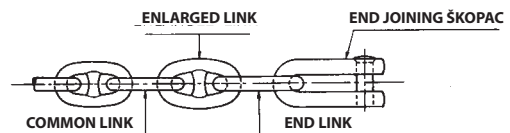
SI. 209 c

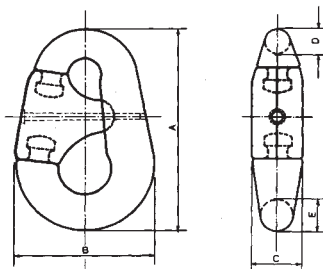
- A ≈ 8,7 d
- B ≈ 5,2 d
- C ≈ 3,1 d
- D ≈ 1,4 d
- E ≈ 1,8 d
- F ≈ 1,4 d
- H ≈ 2,4 d
- P ≈ 4,6 d



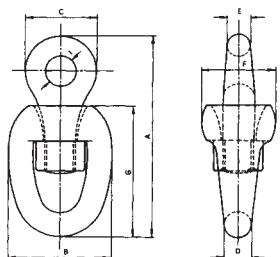
SI. 209 d

- A ≈ 8,6 d
- B ≈ 3,8 d
- C ≈ 3,0 d
- D ≈ 1,2 d
- E ≈ 1,4 d
- H ≈ 1,4 d
- I ≈ 5,9 d



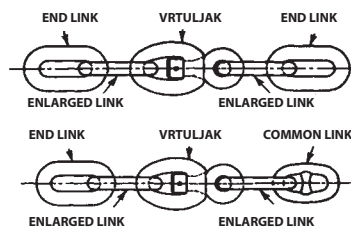


Sl. 209 e



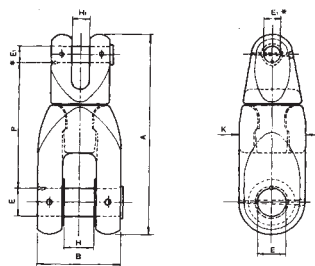
Sl. 209 f

- A ≈ 9,7 d
- B ≈ 4,7 d
- C ≈ 3,8 d
- D ≈ 1,2 d
- E ≈ 1,2 d
- F ≈ 3,8 d
- G ≈ 6,3 d
- I ≈ 1,4 d



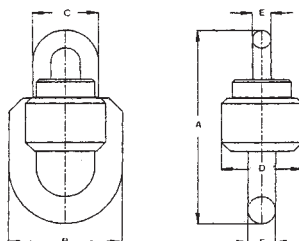
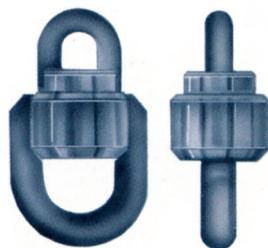
Povezvanje sa joining škopcem "D" tipa

Povezvanje sa "Kenter" škopcem



Sl. 209 g

*OBLONG ON K4



Sl. 209 h

- A ≈ 10,85 d
- B ≈ 6,2 d
- C ≈ 3,6 d
- D ≈ 4,4 d
- E ≈ 1 d
- F ≈ 1,5 d

TABLICA TEŽINA SPOJNIH ELEMENATA ZA BRODSKE LANCE

| Promjer D | Common link | Enlarged link | Open end link | Kenter škopac (sl. 208 a) | Joining škopac tip D (sl. 209 b) | Sidreni škopac tip D ISO standard (sl. 209 c) | approx mass 27,5 met | mass 100 met |
|-----------|-------------|---------------|---------------|---------------------------|----------------------------------|---|----------------------|--------------|
| mm | kg | kg | kg | kg | kg | kg | kg | kg |
| 12,5 | 0,2 | 0,27 | 0,3 | 0,3 | 0,5 | 0,7 | 110 | 350 |
| 14 | 0,27 | 0,38 | 0,45 | 0,48 | 0,8 | 1,1 | 130 | 440 |
| 16 | 0,38 | 0,49 | 0,6 | 0,62 | 1 | 1,5 | 170 | 575 |
| 17,5 | 0,49 | 0,62 | 0,7 | 0,81 | 1,3 | 2 | 180 | 685 |
| 19 | 0,62 | 0,77 | 0,9 | 1,1 | 1,7 | 2,5 | 220 | 810 |
| 20,5 | 0,8 | 1,1 | 1,1 | 1,3 | 2,0 | 3 | 264 | 975 |
| 22 | 0,9 | 1,2 | 1,3 | 2 | 3 | 4 | 305 | 1166 |
| 24 | 1,2 | 1,7 | 1,8 | 2 | 3 | 5 | 362 | 1318 |
| 26 | 1,6 | 2,2 | 2,2 | 3 | 4 | 6 | 425 | 1539 |
| 28 | 1,9 | 2,8 | 2,9 | 4 | 5 | 8 | 493 | 1775 |
| 30 | 2,4 | 3,2 | 3,3 | 4 | 6 | 9 | 566 | 2028 |
| 32 | 2,9 | 3,9 | 4 | 5 | 7 | 11 | 644 | 2298 |
| 34 | 3,4 | 4,7 | 5 | 6 | 10 | 14 | 727 | 2584 |
| 36 | 4 | 5,5 | 5,9 | 7 | 11 | 16 | 815 | 2967 |
| 38 | 4,7 | 6,1 | 6,8 | 8 | 12 | 18 | 909 | 3292 |
| 40 | 5,5 | 7,1 | 8 | 9 | 13 | 20 | 1007 | 3634 |
| 42 | 6,4 | 8,4 | 9,6 | 11 | 17 | 25 | 1110 | 3992 |
| 44 | 7,4 | 10 | 11,2 | 13 | 19 | 27 | 1218 | 4368 |
| 46 | 8,5 | 11,5 | 13 | 14 | 21 | 30 | 1331 | 4761 |
| 48 | 9,8 | 13,1 | 15 | 15 | 23 | 34 | 1450 | 5170 |
| 50 | 11 | 15 | 17 | 18 | 29 | 41 | 1573 | 5596 |
| 52 | 13 | 17 | 20 | 20 | 31 | 45 | 1701 | 6040 |
| 54 | 14 | 19 | 22 | 20 | 34 | 50 | 1835 | 6500 |
| 56 | 16 | 21 | 23 | 24 | 38 | 54 | 1973 | 6976 |
| 58 | 17 | 23 | 25 | 28 | 44 | 65 | 2117 | 7596 |
| 60 | 19 | 25 | 27 | 28 | 48 | 70 | 2265 | 8110 |
| 62 | 21 | 28 | 30 | 33 | 52 | 76 | 2419 | 8642 |
| 64 | 23 | 31 | 34 | 38 | 57 | 82 | 2577 | 9191 |
| 66 | 25 | 34 | 38 | 38 | 66 | 94 | 2741 | 9757 |
| 68 | 27 | 37 | 42 | 44 | 70 | 101 | 2909 | 10339 |
| 70 | 30 | 40 | 45 | 44 | 75 | 108 | 3083 | 10938 |
| 73 | 34 | 45 | 52 | 51 | 87 | 124 | 3353 | 11869 |
| 76 | 40 | 50 | 59 | 58 | 99 | 141 | 3634 | 12837 |
| 78 | 42 | 55 | 63 | 65 | 106 | 150 | 3828 | 13504 |
| 81 | 46 | 61 | 70 | 74 | 119 | 171 | 4128 | 14536 |
| 84 | 52 | 68 | 78 | 84 | 134 | 193 | 4440 | 15605 |
| 87 | 58 | 75 | 86 | 94 | 150 | 218 | 4762 | 17090 |
| 90 | 64 | 82 | 95 | 105 | 167 | 243 | 5097 | 18250 |
| 92 | 69 | 88 | 100 | 105 | 175 | 256 | 5326 | 19040 |
| 95 | 75 | 98 | 112 | 115 | 200 | 290 | 5679 | 20260 |
| 97 | 80 | 102 | 120 | 135 | 210 | 305 | 5920 | 21100 |
| 98 | | | | | | | | |
| 100 | 88 | 112 | 130 | 150 | 230 | 335 | 6292 | 23380 |
| 102 | 93 | 120 | 138 | 150 | 243 | 350 | 6546 | 23260 |
| 105 | | | | | | | | |
| 107 | 109 | 140 | 158 | 175 | 285 | 410 | 7204 | 25539 |
| 108 | | | | | | | | |
| 111 | 120 | 160 | 175 | 200 | 305 | 445 | 7752 | 27420 |
| 114 | 130 | 173 | 193 | 225 | 325 | 475 | 8177 | 28880 |
| 117 | 142 | 185 | 210 | 225 | 345 | 505 | 8613 | 30380 |
| 120 | | | | | | | | |